



artcommune  
gallery

76 Bras Basah Road #01-01 Carlton Hotel Singapore 189558 | +65 6336 4240 | +65 9747 9046  
www.artcommune.com.sg | UEN 200909244C

FOR IMMEDIATE RELEASE: 8 JANUARY 2021



## Vistas of the Mind

### Paintings by Tong Chin Sye

22 Jan - 8 Feb 2021

In conjunction with Singapore Art Week 2021 and Bras Basah Complex Joint Art Week 2021, artcommune gallery is delighted to present *Vistas of the Mind: Paintings by Tong Chin Sye*. This latest solo exhibition by the 2nd-generation artist features around 20 works, including a series of nostalgic watercolours of Old Singapore dating between 1980s and 1990s. Also on showcase are his many fascinating portrayals of overseas landscapes and minority cultures in oil and mixed media. The works span from 1983 to current, and most are on exhibit for the first time.

**Tong Chin Sye** (b. 1939, Singapore) is a multi-media artist trained in both Western and Chinese art. He was previously a part-time lecturer in Western Art at the Nanyang Academy of Fine Arts and has participated in numerous local and overseas exhibitions over the years. He clinched the first prize in the Port of Singapore Authority Open Art Competition in 1987 and represented Singapore at the Flemish Watercolour Days held at Zaventem, Belgium in 1988.





artcommune  
gallery

76 Bras Basah Road #01-01 Carlton Hotel Singapore 189558 | +65 6336 4240 | +65 9747 9046  
www.artcommune.com.sg | UEN 200909244C

An avid traveler, Tong Chin Sye has journeyed across continents in his painterly quest for new sights and cultural understanding. His landscape paintings feature various cities across Asia, Europe and Latin America. From a bustling town scene to a quiet backyard in a provincial village, from labourers by the seaside to indigenous folks engaged in casual routines, his paintings absorb us through the curious lens of a traveler who explores the life and customs of others through the graininess of everyday life. The assiduous combination of East-West techniques also reflects his multifaceted art training.

Supported by



### **Exhibition Period**

**Date:** 22 January - 8 February 2021

**Time:** 12 - 7pm daily

**Venue:** artcommune gallery (address below)

### **Contact Information**

artcommune gallery

76 Bras Basah Road

#01-01 Carlton Hotel

Singapore 189558

**Tel:** +65 63364240. **M:** +65 97479046

[www.artcommune.com.sg](http://www.artcommune.com.sg)

**For media enquiries or high-resolution image requests, please contact:**

Ms. Valerie Anne Lim

**Tel:** +65 63364240 **M:** +65 98205731

**Email:** [valerie@artcommune.com.sg](mailto:valerie@artcommune.com.sg)



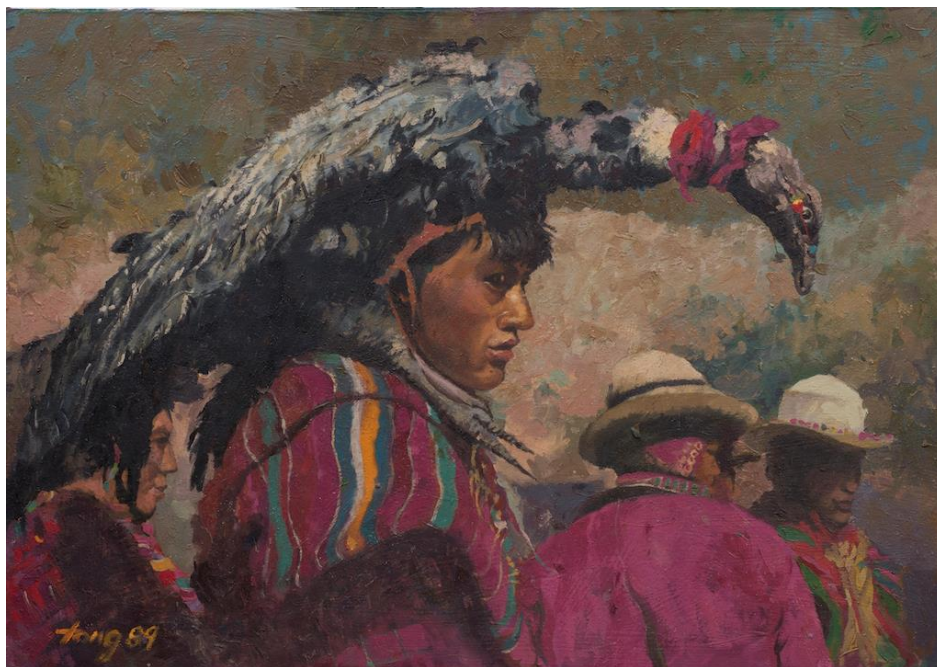
artcommune  
gallery

76 Bras Basah Road #01-01 Carlton Hotel Singapore 189558 | +65 6336 4240 | +65 9747 9046  
www.artcommune.com.sg | UEN 200909244C

Here are some of the images to some of the exhibits:



*Boats of Banyuwangi, East Java, 2019, Oil on canvas, 64 x 88 cm*



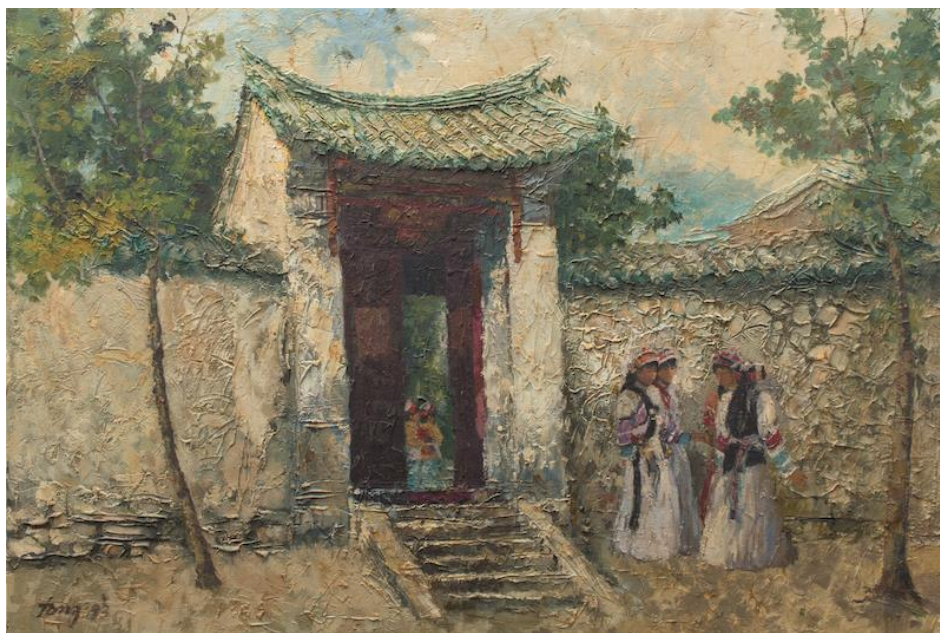
*Peruvian Man, 1989, Oil on canvas, 64 x 88 cm*





artcommune  
gallery

76 Bras Basah Road #01-01 Carlton Hotel Singapore 189558 | +65 6336 4240 | +65 9747 9046  
www.artcommune.com.sg | UEN 200909244C



*Yunnan House, China, 1993, Mixed media on canvas, 75 x 110 cm*



*Donkeys, 1995, Mixed media on canvas, 75 x 110 cm*

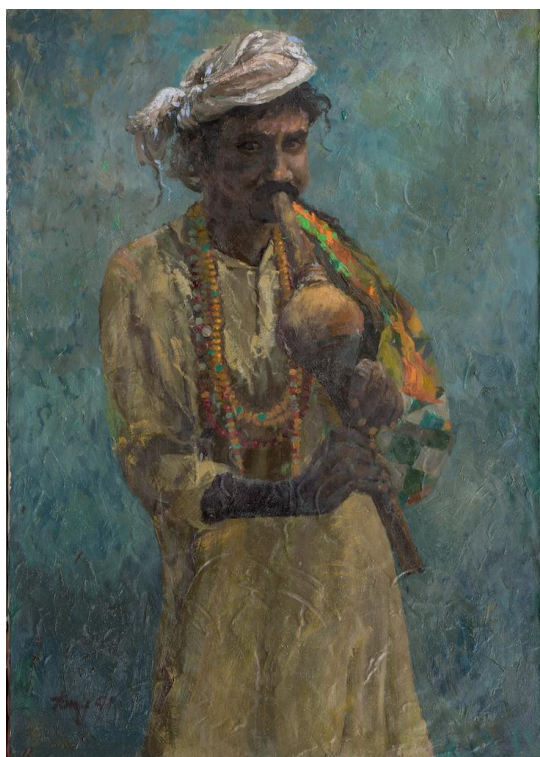


artcommune  
gallery

76 Bras Basah Road #01-01 Carlton Hotel Singapore 189558 | +65 6336 4240 | +65 9747 9046  
www.artcommune.com.sg | UEN 200909244C



*The Yi People of Yunnan, 1993, Mixed media on canvas, 64 x 88 cm*



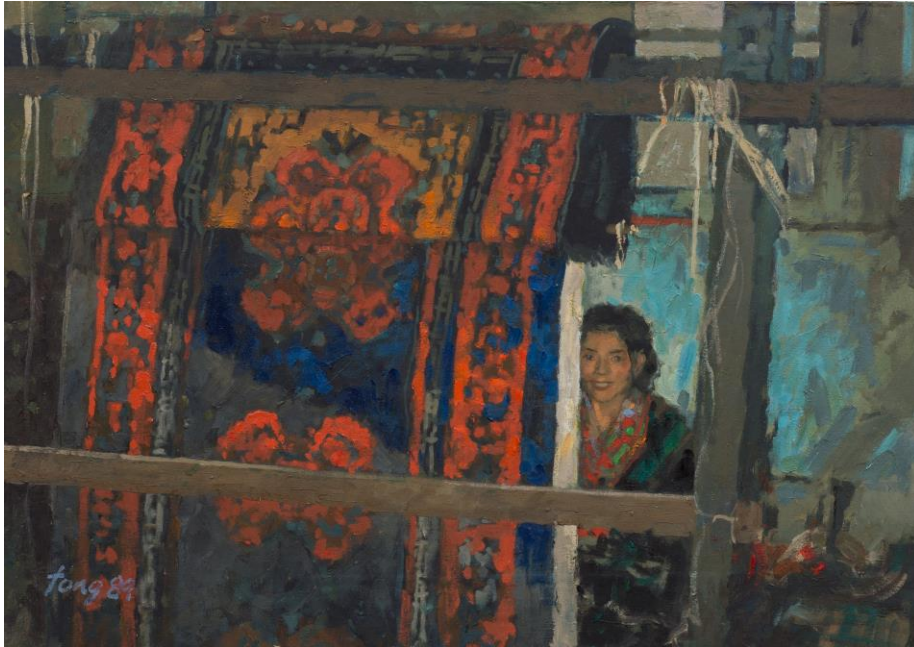
*Pakistani Player, 1991, Oil on canvas, 88 x 64 cm*





artcommune  
gallery

76 Bras Basah Road #01-01 Carlton Hotel Singapore 189558 | +65 6336 4240 | +65 9747 9046  
www.artcommune.com.sg | UEN 200909244C



*Tibet, 1989, Oil on canvas, 64 x 88 cm*



*Bugis Street, 1990, Watercolour on paper, 52 x 72 cm*



artcommune  
gallery

76 Bras Basah Road #01-01 Carlton Hotel Singapore 189558 | +65 6336 4240 | +65 9747 9046  
www.artcommune.com.sg | UEN 200909244C



*Singapore River*, 1983, Watercolour on paper, 52.5 x 72 cm



*Sungei Road (Thief Market)*, 1983, Watercolour on paper, 51.5 x 72 cm