

FOR IMMEDIATE RELEASE: 5 DECEMBER 2018

Iconic Landmarks of the World

Paintings by

Lim Tze Peng | Ong Kim Seng | Tan Choh Tee | Tong Chin Sye
Yeo Hoe Koon | Anthony Chua Say Hua | Ho Sou Ping

artcommune and AC43 gallery's final exhibition into the year of 2018 features over 20 landscape paintings by various Singapore artists renowned for their painterly quests of iconic landmarks around the world. Many of the selected works are on showcase for the first time, bringing together pieces by Singapore artists who, over the course of their careers, have approached landscapes—local and abroad—with curious minds and technical innovation. The exhibits include Lim Tze Peng's 1980s-90s ink paintings of early Singapore and Balinese landscapes; Ong Kim Seng's lyrical watercolours of sun-basked Tibetan and Nepalese scenes; Tan Choh Tee's tranquil oil sceneries of Bali and Singapore's Duxton Hill; Tong Chin Sye's curious reflections of the Taj Mahal and ancient Rajasthan temples in India; Yeo Hoe Koon's lyrical semi-abstract renditions of Balinese and Singapore landmarks; Anthony Chua Say Hua's intuitive and bright ink compositions of Singapore River and Marina Bay Sands; and Ho Sou Ping's romantic ink composition of Tanah Lot, Bali conveyed through an unconventional combination of rich, bold colours.

The art of Chinese landscape painting had already flourished into an independent genre by the time of the Tang Dynasty (618 - 906). Although not formalised as a genre in the Western art world till the 16th Century, the tradition of landscape painting also dates back to ancient times when the Greeks and Romans first began creating wall paintings reflecting landscapes and gardenscapes. As times and cultures evolved, how would such a classical genre translate into the unique productions of our local artists who have been broadly exposed to and trained in both Chinese and Western art practices?

Exhibition Period

Date: 15 - 31 December 2018

Time: 12pm – 7pm daily

Venue: artcommune gallery (address below)

Contact Information

artcommune gallery

231 Bain Street

Bras Basah Complex

#03-39 Singapore 180231

Tel: +65 63364240 **M:** +65 97479046

www.artcommune.com.sg

231 Bain Street Bras Basah Complex #03-39 Singapore 180231 | +65 6336 4240 | +65 9747 9046
www.artcommune.com.sg | UEN 200909244C

For media enquiries or high-resolution image requests, please contact:

Ms. Valerie Anne Lim

Tel: +65 63364240 M: +65 98205731

Email: valerie@artcommune.com.sg

Here are the images to some of the artworks on exhibit:



Lim Tze Peng, *Tanah Lot*, 1998, Ink and colour on paper, 68 x 137 cm



Lim Tze Peng, *Aerial View of Sultan Mosque*, 1983, Ink and colour on paper, 68 x 68 cm

231 Bain Street Bras Basah Complex #03-39 Singapore 180231 | +65 6336 4240 | +65 9747 9046
www.artcommune.com.sg | UEN 200909244C



Ong Kim Seng, *Rome*, 2011, Watercolour on paper, 53 x 73 cm



Ong Kim Seng, *Xigatse*, 2017, Watercolour on paper, 53 x 73 cm

231 Bain Street Bras Basah Complex #03-39 Singapore 180231 | +65 6336 4240 | +65 9747 9046
www.artcommune.com.sg | UEN 200909244C



Tan Choh Tee, *Lyrical Bali*, 1989, Oil on canvas, 52 x 64 cm

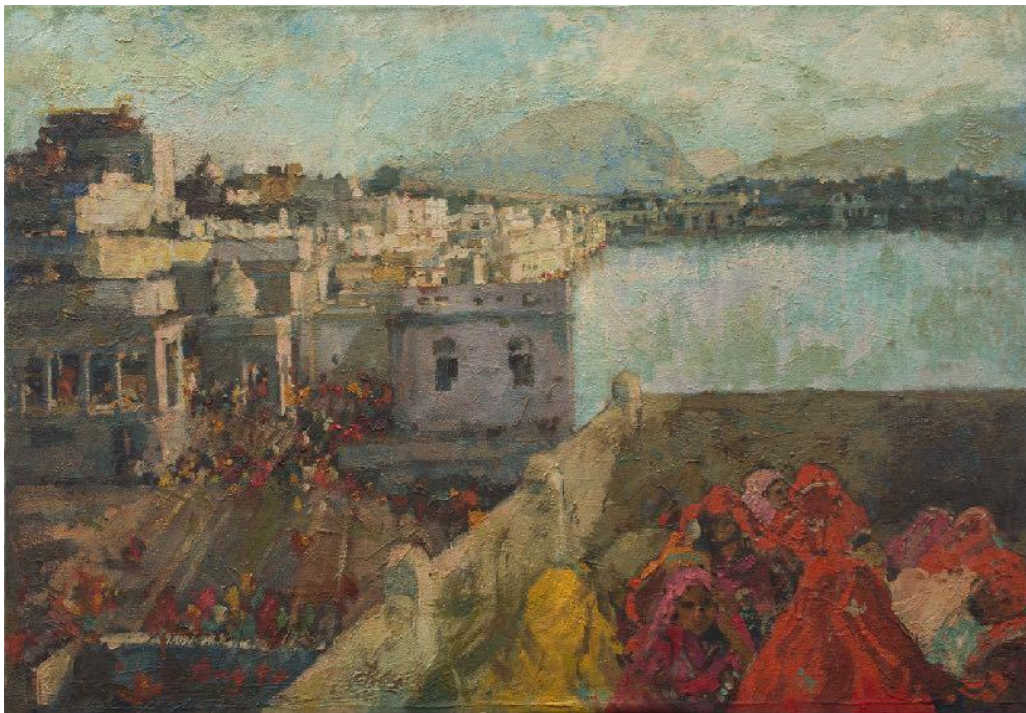


Tan Choh Tee, *Duxton Hill*, 2016, Oil on canvas, 60.5 x 72.5 cm

231 Bain Street Bras Basah Complex #03-39 Singapore 180231 | +65 6336 4240 | +65 9747 9046
www.artcommune.com.sg | UEN 200909244C



Tong Chin Sye, *Taj Mahal*, 1991, Oil on canvas, 110 x 75 cm



Tong Chin Sye, *Pushkar, India*, 1994, Mixed media on canvas, 64 x 88 cm



artcommune
gallery

x

AC43
GALLERY

231 Bain Street Bras Basah Complex #03-39 Singapore 180231 | +65 6336 4240 | +65 9747 9046
www.artcommune.com.sg | UEN 200909244C

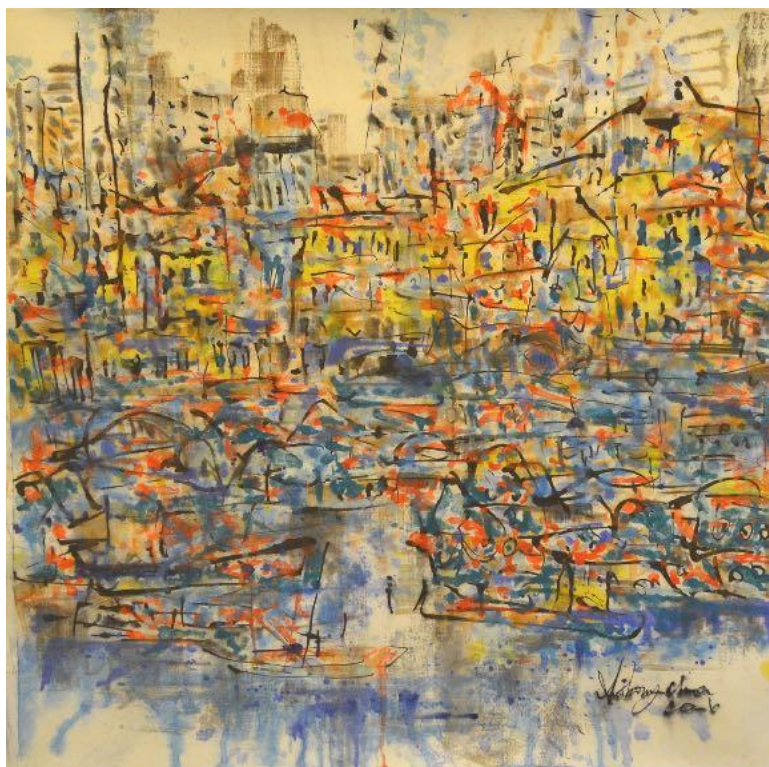


Yeo Hoe Koon, *Pura in Bali*, 2014, oil on canvas, 129 x 78 cm



Yeo Hoe Koon, *Singapore River*, 2015, Gouache on paper, 77 x 53 cm

231 Bain Street Bras Basah Complex #03-39 Singapore 180231 | +65 6336 4240 | +65 9747 9046
www.artcommune.com.sg | UEN 200909244C



Anthony Chua Say Hua, *Singapore River*, 2016, Ink and colour on paper, 107 x 104 cm



Anthony Chua Say Hua, *Marina Bay Sands III*, 2014, Ink and colour on paper, 66 x 66 cm



Ho Sou Ping, *Tibetan River*, 2018, Watercolour on paper, 53.5 x 73.5 cm



Ho Sou Ping, *Tanah Lot*, 2011, Ink and colour on paper, 68 x 68 cm